

# Dynamic

Request a quote online at [www.sourceonex.com](http://www.sourceonex.com)

**SOURCEONE**  
Your One Source Manufacturing Partner

First Quarter | 2009

## SourceOne software produces maximum yield

As the price of gas dropped to below \$2 per gallon from its historic high reached in 2008, steel prices have followed but at a slower pace.

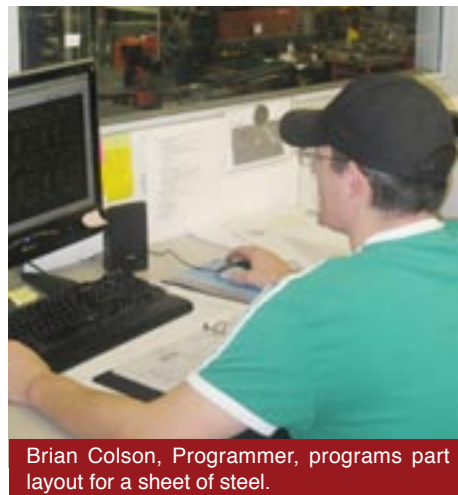
Even before the U.S. entered an economic crisis, SourceOne had already taken action to review its processes, materials and inventory to determine cost and time savings. Material utilization and efficiency remains a focus at SourceOne to stay competitive in the industry.

"Material costs were so high that we want to be sure our process is as lean as possible and utilize the best system for the company," said Matt Gudgel, Supervisor.

To help buck high sheet metal prices, SourceOne uses a new nesting software program that increases part yield from a sheet of steel. In addition, a material resource planning process tracks material utilization and inventory at SourceOne.

"The nesting software is somewhat like a sophisticated version of the old Atari game Tetris," said Mike Kreuzberg, MRP Planner. "With the different shapes of parts, it helps to fit the maximum number of parts onto a sheet of steel automatically. The

Continued on page 2.



Brian Colson, Programmer, programs part layout for a sheet of steel.



The first project recommended by the PIT Crews was the addition of storage shelves and re-organization of inventory at SourceOne.

## PIT Crews initiated in '08

SourceOne jump-started a project to encourage more employee involvement in its improvement process. Two Process Improvement Teams, or PIT Crews, of 10 people each, formed last fall to begin streamlining processes.

PIT Crews assessed the entire facility, starting with their own work areas, to develop process efficiencies, better organization and to eliminate unneeded items.

"Essentially, the PIT Crews are a way to add resources to each team at SourceOne to accomplish their goals," said Chris Reed, Project and Process Development Manager. "The members are empowered to make changes when necessary to better the SourceOne process."

The teams, which meet weekly, provide suggestions to enhance SourceOne's

Continued on page 3.



## Our mission to our customers

No successful enterprise can reach its maximum potential without a firm understanding of its past and a clear road map for its future.

At SourceOne, we make decisions large and small guided by our Vision of the future, our Purpose for being and our guiding statement of Mission. We believe that continual focus on our Vision, Purpose, and Mission will enhance our value to you, our customer, to our staff, and to our company itself.

### VISION

SourceOne is an innovative industry leader who responds rapidly to customer needs with partnership, loyalty, technology, and a focus on excellence.

### PURPOSE

SourceOne exists to be successful by providing for the needs of our customers and employees.

### MISSION

- To provide excellent customer service
- To maintain a vibrant, skilled and dedicated work force
- To provide a safe, quality work environment
- To use our diverse capabilities to meet challenges and facilitate growth

# SourceOne software produces maximum yield

Continued from page 2.

MRP process assists with inventory planning and tracking. The two programs work hand-in-hand to save material and time."

In addition, SourceOne sister company, Bison, uses much of SourceOne's punchings as ballast weight in its portable volleyball and basketball systems. The remaining scrap ships to a reprocessing facility, where it is recycled.



Matt Gudgel, Supervisor



Mike Kreuzberg, MRP Planner

# SourceOne welcomes 20-Group

SourceOne, a DuPont Star Coater Certified company, opened its doors October 22-24 to share ideas and learn from 20-Group members, a DuPont network of owners and plant managers from powder coating companies across the United States.

The 20-Group maintains a non-competitive atmosphere with a philosophy to work together in pursuit of best practices and industry networking opportunities. Member companies host two-day meetings at their facility with presentations, discussion sessions and a site assessment of the host facility. Meetings are facilitated by DuPont personnel, but the host facility determines the agenda. Following the sessions, 20-Group members may contact each other to share tips or seek

advice.

During the facility tour, the SourceOne Harley-Davidson line, which powder coats sprockets for the American-made motorcycle, was a crowd favorite. The 20-Group enjoyed a private evening tour of the Speedway Motor Museum in Lincoln, a classic car museum.

"It was a fantastic event; this was the first time the group was able to see all of our processes, not just powder coating," said Ivan Reed, Division Manager. "They were excited to see the different products and how we join it all together."

SourceOne's evaluation from 20-Group members resulted in favorable ratings in all categories.



Boyd Ober gave a presentation on SourceOne's strategic plan during the 20-Group visit on Oct. 23.



The 20-Group at a business meeting during its visit of SourceOne October 22-24.



From right, Trena Benson, DuPont Star Coater Certified Program Manager/Powder Coat Marketing Manager, and Rose Boyle, Plant Manager of Microfinish Co. Inc., St. Louis, Missouri, participate in the membership meeting discussion.



**Elmer Wessel**  
President  
ewessel@sourceonex.com  
ext: 3128



**Ivan Reed**  
Division Manager  
ireed@sourceonex.com  
ext: 3195



**Jim Starkey**  
Sales Manager  
sales@sourceonex.com  
ext: 3139



**Chris Reed**  
Project and Process  
Development Manager  
creed@sourceonex.com  
ext: 3211



**Jim Kraus**  
Manager of Quoting Services  
jkraus@sourceonex.com  
ext: 3131



**Jack Gleason**  
Engineering Manager  
jgleason@sourceonex.com  
ext: 3134

## SourceOne employees support community

SourceOne employees pooled efforts in support of its annual 2009 United Way Campaign, a SourceOne tradition since 2004. Sixty-two SourceOne employees contributed over \$10,000 through a weekly payroll deduction to the United Way of Lincoln and Lancasater County. IMSCORP and its three subsidiaries ranked in the top 10 companies that participated in the 2008 campaign.

"It is a great program and our employees are very positive in supporting the community in these tough time," said Sue White, HR Manager. "It truly gives employees a sense of helping others in need."



- Together, SourceOne and its sister companies ranked 34 of 420 organizations that run a United Way campaign in Lincoln and Lancaster County. That is up two spots from 2007's campaign.
- Employee giving has doubled since 2005.
- It's grown 54 percent in number of individuals giving to the campaign since 2005.
- Approximately 75 percent of the employees donate to United Way.

# PIT Crews initiated in '08

Continued from page 1.

processes based on their work experience and observations.

"The employees are working with the operations side of the business," Reed said. "They generally have some of the better ideas for improvements and we want to utilize them. The more we can do to improve all of our processes, the better."

SourceOne plans to move forward in 2009 with the formation of additional PIT Crews, which allow employees active participation in decision making. The expansion will be based on supervisor recommendation and employee interest.

"They get to see the rewards of their accomplishments and it is more meaningful because of their involvement," said Ivan Reed, Division Manager.

"Overall, I am looking forward to seeing a better, smoother flow of our products through the efficiencies we find," said Brian Colson, Programmer and PIT Crew member.

Pat Miller, Production Supervisor and 10-year SourceOne employee, joined the PIT Crew during the formation of the original teams.

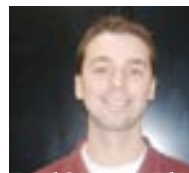
"Being involved opens the eyes of people on the teams and we learn how the different areas can work together better," Miller said.



Members of the Process Improvement Team or PIT Crews include Bobbie Kitchen, Fabrication Welder; left: Steve Prall, Fabrication Leadman; Tim Kinney, Machine Operator; Lee Kennell, Production Coordinator; Dean Bowling, Fabrication Supervisor; Tim Temme, Production Project Coordinator; Robert Tobin, Machine Operator; Pat Miller, Production Supervisor; Josh Todd, Welder; Brian Colson, Programmer; and Chris Reed, Project and Process Development Manager.

## Employees of the month

If you would like to nominate a SourceOne employee, please contact Ivan Reed at 474-6603 ext. 3195 or [ireed@sourceonex.com](mailto:ireed@sourceonex.com).



**DECEMBER**

**Chad Essink**  
Design Engineer



**JANUARY**

**John Knight**  
Shipping and Receiving Assistant



**FEBRUARY**

**Staci Giebelman**  
Production Associate



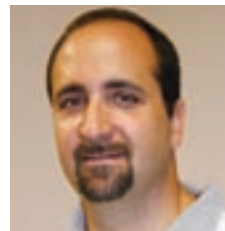
**Ray Swick**  
Powder Coating Manager  
[rswick@sourceonex.com](mailto:rswick@sourceonex.com)  
ext: 3154



**Harley Schuerman**  
Special Projects Manager  
[hschuerman@sourceonex.com](mailto:hschuerman@sourceonex.com)  
ext: 3302



**Eric Slezak**  
Automation and Tooling Supervisor  
[eslezak@sourceonex.com](mailto:eslezak@sourceonex.com)  
ext: 3202



**Jeff Bockoven**  
Supervisor of Quality Assurance  
[jbockoven@sourceonex.com](mailto:jbockoven@sourceonex.com)  
ext: 3120



**Deanna Murray**  
Customer Service Specialist  
[dmurray@sourceonex.com](mailto:dmurray@sourceonex.com)  
ext: 3147



**Kathy Casburn**  
Customer Service Representative  
[kcasburn@sourceonex.com](mailto:kcasburn@sourceonex.com)  
ext. 3166

# Employees, Company Win Awards

SourceOne was cited for its excellent safety practices and three of its employees received awards at the annual company holiday awards luncheon on December 24.

## Company Safety Award

IMSCORP's Safety Award recognizes excellence in safety, attitude and achievement in one of its subsidiary companies. Plant Manager Ivan Reed accepted the 2008 award on behalf of SourceOne.

"Ivan's staff is very proactive and safety conscious," said Jeff Bockoven, Quality Assurance Supervisor. "When it comes to safety, they don't hold back."



Ivan Reed, SourceOne Plant Manager, second from left, receives the Divisional Safety Award from Elmer Wessel, Owner; Sara Flanagan, HR Assistant, and Nick Cusick, Owner.

## SourceOne Supervisor of the Year Eric Slezak, Automation & Tooling Supervisor

Slezak, who oversees SourceOne's Machine Build and tool room, prioritizes communication with customers and employees. One of Slezak's customers, Jim Esch, Senior Mechanical Engineer at Becton-Dickinson Pre-analytical Systems, a medical technology company, can attest to this.

"Eric was great with follow-ups; he is quick with getting answers to us when we have questions," Esch said.



Eric Slezak, Automation & Tooling Supervisor, second from right, won the 2008 Supervisor of the Year Award.

Dave Effle, Shipping and Receiving Supervisor, second from left, received the Safety Star Award and was congratulated by Elmer Wessel, Owner, left, Sara Flanagan, HR Assistant, and Nick Cusick, Owner.

# SOURCEONE

1030 SW 6th Street  
Lincoln, NE 68522

Published especially for:

PRSR STD  
US Postage  
PAID  
MAIL U.S.A.  
68502

## SourceOne Employee of the Year

Steve Prall, Fabrication Leadman

Prall, a SourceOne employee since 2005, is a welder for the company's Fabrication Department. Dean Bowling, Fabrication Supervisor, calls Prall a leader on the floor.

"He has good product knowledge of what we do in our department, gets along well with all the other employees and leads by example in his work ethics," Bowling said.



Steve Prall, Fabrication Leadman, second from right, accepts congratulations on his receipt of the SourceOne Employee of the Year Award.

## Safety Star Award

Dave Effle, Shipping & Receiving  
Supervisor

Each year, one employee is recognized who goes above and beyond in safety. Effle holds a 15-year injury free career at SourceOne and is certified by the Safety Council of Nebraska to train employees to earn their forklift certification. Effle approaches work sensibly and safely, said Ivan Reed, Division Manager.



## SourceOne Capabilities

*Establish a partnership with us.*

- Artistic Fabrication
- CNC Laser Cutting
- CNC Machining
- CNC Tube Bending
- CNC Turret Punching
- Complete Product Manufacturing & Assembly
- Dedicated Manufacturing Cells
- Engineering Design & Drafting
- Expendable Plant Tooling
- Fabrication
- In-Plant Consultation
- Maintenance Machine Work & Repair
- Offshore Outsourcing
- Packaging
- Plant Automation
- Powder Coating & Finishing
- Pressure Vessel Welding
- Process Engineering
- Product Design
- Production Welding
- Prototyping
- Rebuilding of Special Machines
- Resistance Welding & Electrodes
- Sandblasting
- Sheet Metal Fabrication
- Special Machine Building
- TIG Production Welding
- Tooling & General Machine Work
- Warehousing

